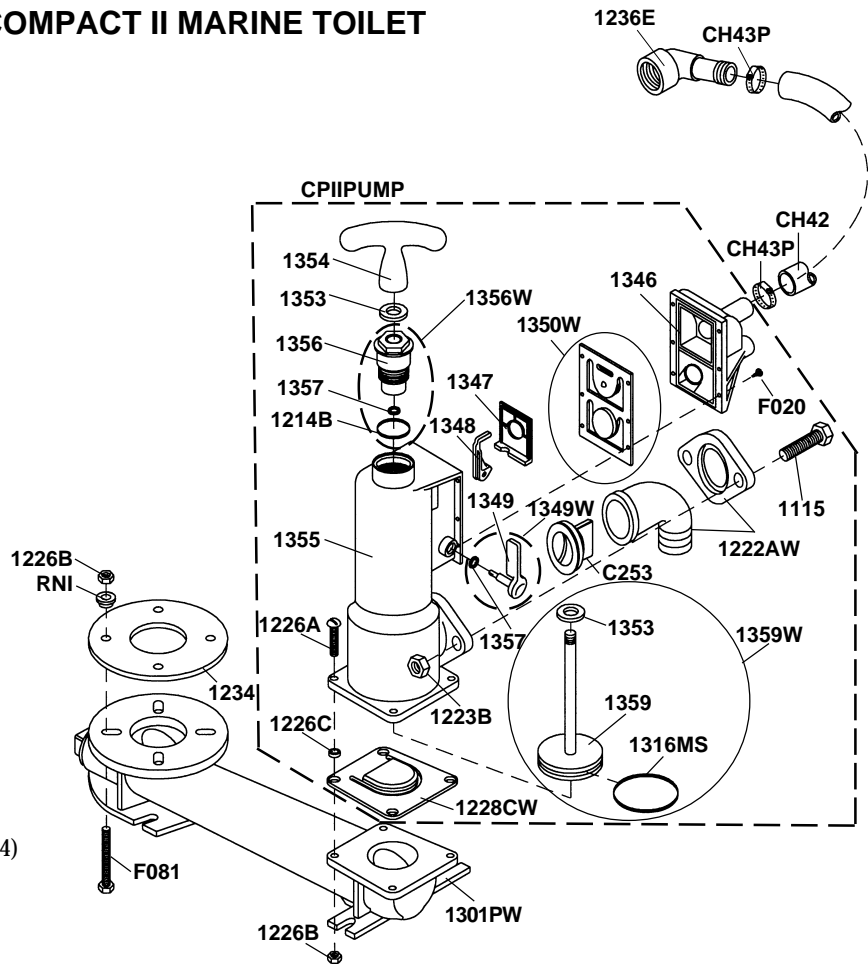
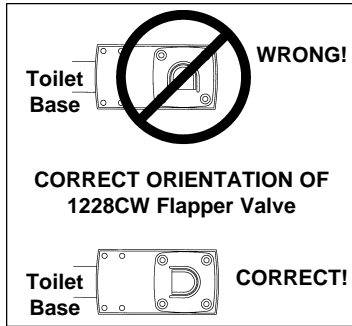


# EXPLODED PARTS VIEW, COMPACT II MARINE TOILET



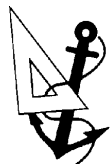
Part No.	Part Name
1115	Discharge Bolt (2)
1214B	Cartridge "O" Ring
1222AW	90° Discharge Ell & Flange
1222B	Discharge Fitting - Straight (Optional, not shown)
1223B	Discharge Nut (2)
1226A	1/4 - 20 x 1 1/4" RH S/S Screw (4)
1226B	1/4 - 20 Nut, Stainless Steel (8)
1226C	Plastic Spacer Washer (4)
1228CW	Flapper Valve Assembly
1301PW	Toilet Base Assembly
1316MS	Piston "O" Ring
1346	Check Valve Housing
1347	Separator Plate
1348	Cam
1349	Shutoff Handle
1349W	Shutoff Handle with seal
1350	Check Valve Rubber Blank
1350W	Check Valve Assembly (incl. 1350,1351 & 1352)
1351	Flapper Weight #1 (7/8" Dia.)
1352	Flapper Weight #2 (1" Dia.)
1353	Piston Rod Bumper Washer (2)
1354	Flushing Handle
1355	Pump Housing, Compact II
1356	Seal Cartridge
1356W	Seal Cartridge Assembly (1214B, 1356, 1357)
1357	U-Cup Seal (2)
1359	Piston
1359W	Piston Rod Assy. (incl. 1316MS, 1353 & 1359)
C253	Joker Valve
CH42	Hose (3/4" I.D.)
CH43P	Hose Clamp, Nylon (2)
F020	#10 Self-Tapping Screw (6)
F081	Hexhead Cap Screw (1/4-20 x 2"), Stainless Steel

## MAJOR SUBASSEMBLIES

Part No.	Part Name
CPIILBA	Compact II Pump and Base Assy, Complete
CPIIPUMP	Compact II Pump Assy. Complete
CPIIRFK	Compact II Retrofit Kit (incl. CPIIPUMP, 1236C, CH42 and CH43P)
CPRKII	Compact II Repair Kit

## BOWL AND SEAT

1234	Bowl Gasket
1236AW	Spud Assy.(supplied w/bowls)
1236E	Bowl Elbow
1237W	Marine-size Bowl Assembly (w/spud assy.)
1238A	Marine-size Seat and Cover
163000	In-Line Strainer
1PCP22	C.P., Cleans Potties, Bio-enzymatic. 22 oz.
RNI	Shoulder Washer (4)
TWK	Raritan Toilet Water Kit. Allows Raritan "Concentrate" to be metered into the flush water.
CON22	Raritan "Concentrate" head deodorant and lubricant. Used with TWK. Replacement bottle 22 oz..
SH	1 1/2" I.D. Sanitation Hose (sold by the foot)



**RARITAN**  
Engineering Company, Inc.

530 Orange Street, P.O. Box 1157, Millville, NJ 08332 USA  
 Telephone: 856-825-4900 FAX: 856-825-4409  
 www.raritaneng.com  
 Southern Office and Plant:  
 3101 SW Second Ave., Fort Lauderdale, FL 33315 USA  
 Telephone: 954-525-0378 FAX: 954-764-4370