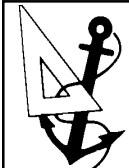
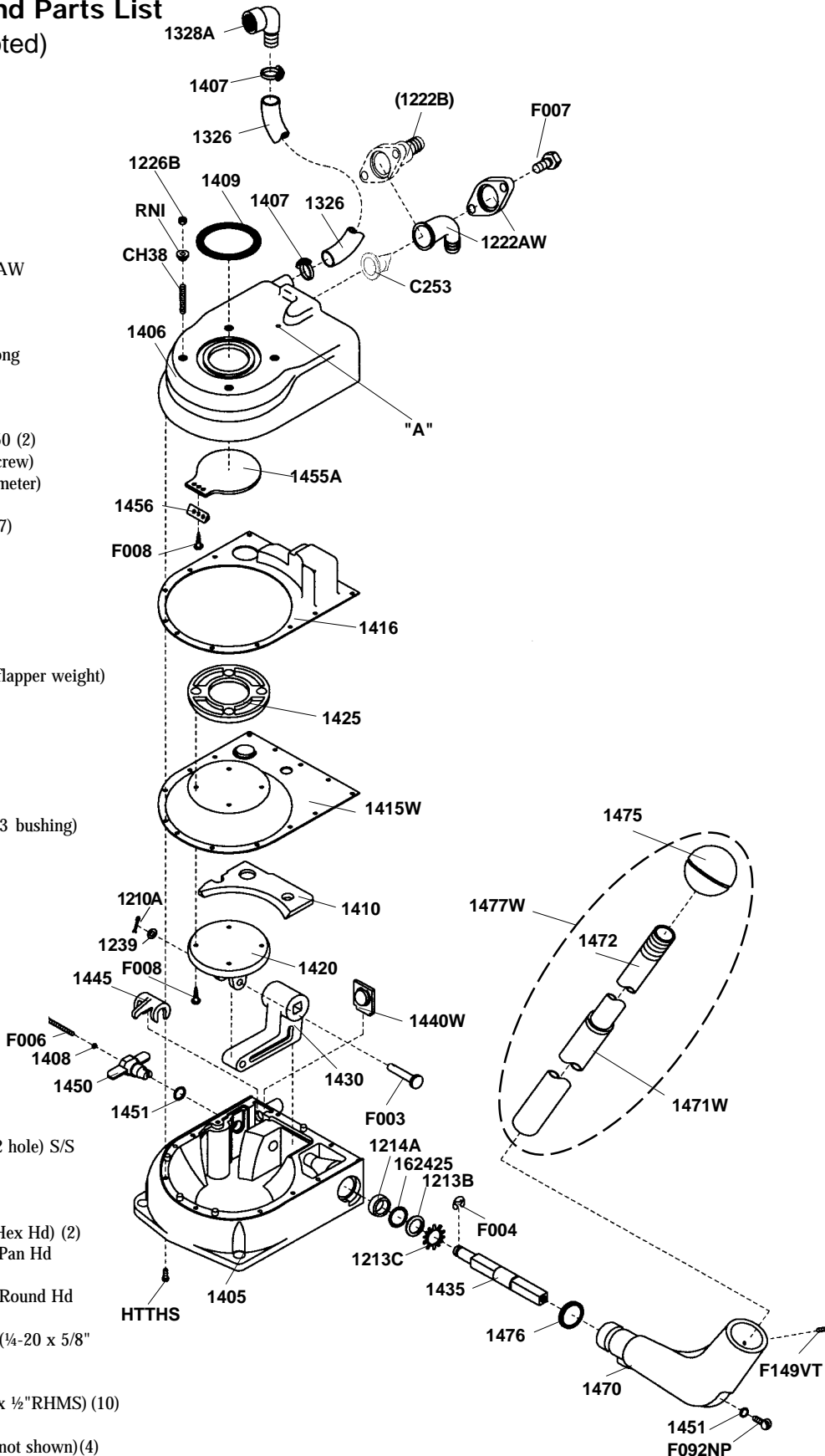


Cricket™ Exploded View and Parts List

(Quan. 1 unless noted)

Part #	Part Name
1210A	Cotter Pin (3/32" D. x 1/2" L.) S/S
1213B	Delrin Washer
1213C	Seal Snap Ring (#6000-100 BC)
1214A	Shaft Seal
1222AW	90° Discharge W/flange
1222B	Straight Discharge Fitting (optional)
1226B	1/4-20 Hex Nut, S/S (4)
1236AW	Bowl Spud Assy (not shown)
1237W	Standard Bowl Assembly, incl. 1236AW (not shown)
1238A	Standard Seat and Cover (not shown)
1239	1/4 Flat S/S Washer
1326	1" White Gloss PVC Hose, 11 1/2" long
1328A	Bowl Elbow
1405W	Lower Housing
1406	Upper Housing
1407	Hose Clamp, white nylon #22HC 1250 (2)
1408	"O" Ring (Dry Pump Handle Shaft Screw)
1409	Bowl Seal "O" Ring (#331, 70 Durometer)
1410	Separator Plate
1415AW	Diaphragm Assembly (includes #1417)
1416	Compensator
1417	Flapper Weight
1420	Piston
1425	Piston Plate
1430	Internal Lever
1435	Drive Shaft
1440W	Inlet Flapper Assembly (incl. #1441 flapper weight)
1445	Dry Pump Cam
1450	Dry Pump Lever
1451	"O" Ring, Dry Pump Handle Shaft
1455A	Bowl Base Flapper
1456	Flapper Hold Down
1470	Handle Socket
1471W	Outer Flush Handle Assy. (incl. #1473 bushing)
1472	Inner Flush Handle (threaded)
1473	Flush Handle Bushing (not shown)
1475	Flush Handle Ball Grip
1476	Handle Socket "O" Ring
1477W	Flush Handle Assembly, Complete
1490W	Dry Flush Extension Kit (not shown)
162425	O-Ring
C253	Joker Valve
CH38	Bowl Stud, 1/4-20 x 2" S/S (4)
CKRK	Cricket Overhaul Kit Contains - 1210A, 1213B, 1213C, 1214A, 1239, 1408, 1409, 1415W, 1416, 1440W, 1451 (2), 1455, 1476, C254 and RNI (4)
F003	Clevis Pin (1/4 Dia. x 1 1/2" long, 3/32 hole) S/S
F004	E-Ring, S/S
F006	Dry Flush Handle Screw, S/S (#6-32 x 1 3/8" Hex Washer Head)
F007	Discharge Screw, S/S (3/8"-16 x 1" Hex Hd) (2)
F008	Self-Tapping Screw, S/S (#10 x 5/8" Pan Hd Philips) (4)
F091	Self-Tapping Screw, S/S (#10 x 3/4" Round Hd Philips)
F092NP	Handle Socket Mounting Screw, S/S (1/4-20 x 5/8" RHMS)
F149VT	Set Screw, S/S (#10-32 x 1/4")
HTTHS	Pump Assembly Screw, S/S (#10-32 x 1/2" RHMS) (10)
RNI	Bowl Mounting Shoulder Washer (4)
VCAP	Vinyl Cap for Bowl Mounting Nuts (not shown) (4)



RARITAN
Engineering Company, Inc.

530 Orange Street, P.O. Box 1157, Millville, NJ 08332 USA
 Telephone: 856-825-4900 FAX: 856-825-4409
 www.raritaneng.com
 Southern Office and Plant:
 3101 SW Second Avenue, Fort Lauderdale, FL 33315 USA
 Telephone: 954-525-0378 FAX: 954-764-4370