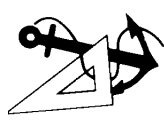
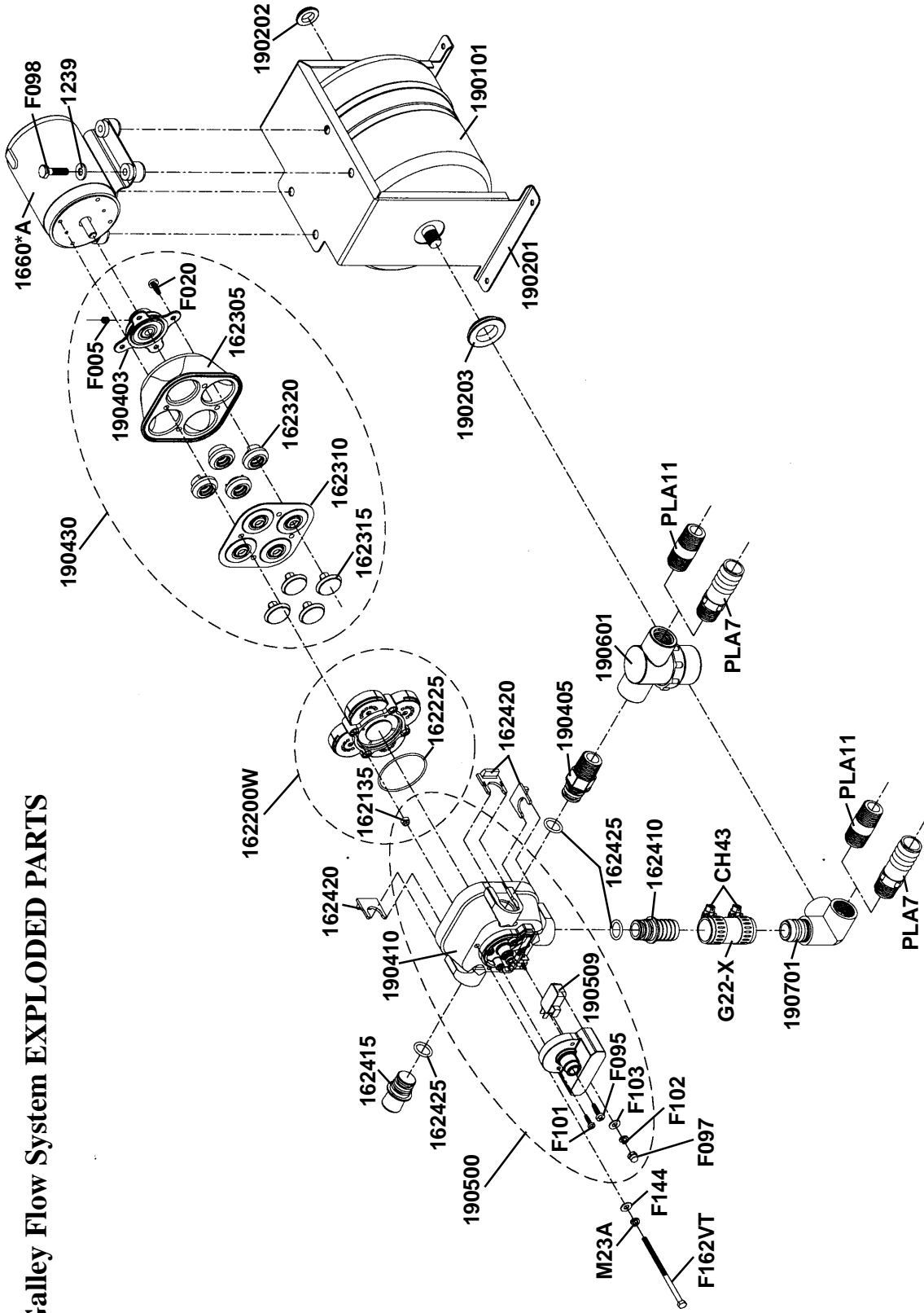


Galley Flow System EXPLODED PARTS



RARITAN
Engineering Company, Inc.

530 Orange Street, P.O. Box 1157, Millville, NJ 08332 USA
 Telephone: 856-825-4900 FAX: 856-825-4409
 www.raritaneng.com
 Southern Office and Plant:
 3101 SW Second Avenue, Fort Lauderdale, FL 33315 USA
 Telephone: 954-525-0378 FAX: 954-764-4370

Specifications Subject to Change Without Notice. Printed in U.S.A.

L344 0702wmt

Galley Flow System PARTS LIST

(Quantities are one unless otherwise indicated)

Before ordering, locate required part on exploded parts view to be sure you are ordering the correct part.

<u>Part No.</u>	<u>Description</u>	<u>Part No.</u>	<u>Description</u>
1239	1/4" Flat S/S Washer (4)	F101	6-32 x 3/8 Hex Hd S/S Screw (2)
1660*A	Galley Flow Motor	F102	#6 Lockwasher S/S
162135	Cone Seal (4)	F103	#6 Flat Washer S/S
162225	O-Ring	F144	#10L 18-8 S/S Washer (4)
162305	Lower Housing includes 162315 (4)	F162VT	Mounting Bolt (4)
162310	Diaphragm includes 162315 (4)	G22-X	3/4 NYL Reinforced Hose (sold by the foot)
162315	Piston (4)	M23A	Lockwasher (4)
162320	Piston Seat (4) includes 162315 (4)	PLA7	Male Adapter 1/2 MPT x 3/4 Barb
162410	3/4" Hose Barb Straight	PLA11	1/2 x 2" Nipple
162415	Plug Fitting	162200W	Middle Housing Assembly
162420	Fitting Clip (3)	190400	Galley Flow Inlet Pump Assembly includes 162200W, 190410, 190430
162425	O-Ring (3)	190403	Bearing Plate Assembly includes 162315 (4) and F005
190101	Tank: .8 Gallon Steel with Internal Bladder	190410	Upper Housing Assembly includes 162135 (4)
190201	Mounting Frame for Tank	190430	Lower Housing Assembly
190202	Rubber Grommet	190450	Pump and Pressure Switch Assembly includes 162200W, 162420 (3), 190430, 190500
190203	Rubber Grommet	190500	Galley Flow Pressure Switch and Upper Housing Assembly
190509	Galley Flow Micro Switch	1910*	Galley Flow Pump with Motor, In-Line Strainer and Pressure Switch
190601	In-Line Strainer, Female	DIAPUMPRK	Diaphragm Pump Repair Kit includes 162200W, 162310, 162315 (4), 162425 (3)
190701	Side ell Sub-Assy. for Tank		
CH43	Hose Clamp #10 43H Series (2)		
F005	1/4-20 x 5/16 SS Hex SOC		
F020	#10 x 1/2 STSM Screw (4)		
F095	#8 x 3/4 Phil Pan Screw		
F097	Acorn Nut for Wire		
F098	1/4-20 x 1 Hex Hd Screw (4)		

** Specify Voltage (12V, 24V, 32V)