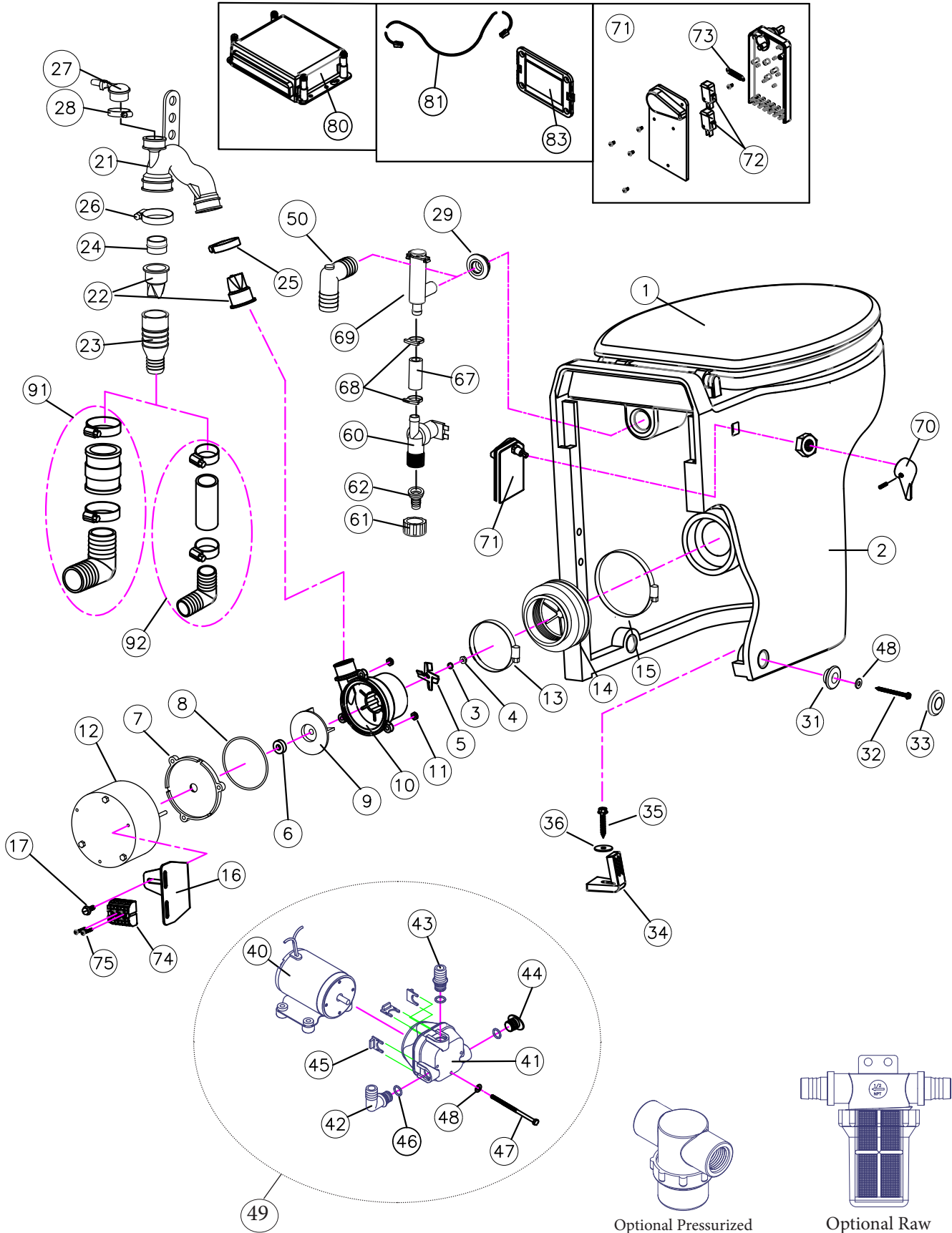


Marine Elegance Comfort Height PARTS LIST - Smart Handle

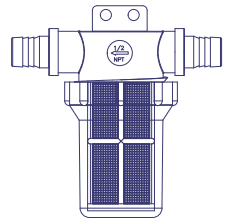
Item#	Part No.	Description	PARTS NOT SHOWN	
1	241011SC	Seat & Cover (Slow Close)		
2	241101	ME Bowl, Comfort Hgt, White	221175	L Bolt (2)
3	M23A	#10 Lockwasher SS (5)	221170A	Discharge Hose Support Strap
4	1108A	10-32 SS Nut	F188	Well Nut 10-32 (3)
5	53145	Macerator Blade		
6	31-102	Motor Shaft Seal		
7	221110	Discharge Pump Seal Plate		
8	221105	O-Ring		
9	161115	Impeller		
10	221115	Discharge Pump Macerator Housing	80	STC548W Smart Toilet Control (12 & 24 VDC)
11	31-114	Lock Nut 10-32 W/Nylon(3)	81	STC545 Control Cable 7 ft
12	221012	Discharge Motor 12 V	83	STC543W Touch Panel w/Back Plate
12	221024	Discharge Motor 24V		
13	221125	Bowl Throat Adapter Clamp - Pump		
14	221120	Bowl Throat Adapter	70	AM665W Handle replacement with set screw
15	221130	Bowl Throat Adapter Clamp - Bowl	71	AV600W Handle Flush Control Replacement
16	221158	Discharge Pump Support Bracket for part 241101	72	AM667 Microswitch V7 Series, 25A at 250 VAC
17	F193VT	Screw 10-32 X 3/8 W/VT	73	AM666 Spring .250 X 1.375, 316 S/S
21	221141W	Discharge Hose (includes # 22 thru 28)	74	ETB3 Terminal Block, 3 Poles, Push Connection
22	221135W	Joker Valve (2) (Also includes #24)	75	F108 Screw: #4 X 7/8 Phil. Flat Head, Type B Self Threading, 18-8 S/S (2)
23	221145	Discharge Adapter Fitting		
24	221146	Joker Valve Insert		
25	221160	Discharge Hose Clamp (small)		
26	221165	Discharge Hose Clamp (large)		
27	VLVE	Vent Valve Assembly		
28	FC001	Vent Valve Hose Clamp		
29	221150	Spud Seal		
31	221210	ME Bowl Mtg Bushing (2)		
32	F200	Screw Mtg, 18-8 SS Hex Slotted #8 x 2" (2)		
33	221215	ME Bowl Mounting Cap (2)		
34	241130M	ME Mounting "L" Brackets (2)		
35	F189	ME Screw: Bowl Mounting (2)		
36	F321	ME Washer Fender Style (2)		
REMOTE INTAKE PUMP UNITS			REPAIR / REPLACE KITS	
40	166012A	Pump Motor 12VDC	MERK	Discharge Pump Repair Kit (includes #6, 8, 22 and 24)
40	166024A	Pump Motor 24VDC	22100**	Discharge Pump Assembly (includes #3 thru 12 and 21 thru 28)
41	162000W	Remote Intake Pump w/o Motor	221300W	12 v Fresh Water Inlet Assy (includes # 60 thru 69)
42	162405	3/4" Hose Barb 90° Fitting	221301W	24 v Fresh Water Inlet Assy (includes # 60 thru 69)
43	162410	3/4" Hose Barb Straight	162400	Fitting Kit (includes parts 42 thru 46)
44	162415	Plug Fitting		
45	162420	Fitting Retaining Clip (3)		
46	162425	O-ring (3)		
47	F162VT	Inlet Pump Mounting Bolt (4)		
48	F144	#10 Washer SS Flat (4)		
49	166000	Complete Remote Pump 12VDC		
49	166100	Complete Remote Pump 24VDC		
50	PLA26	Elbow Adapter 3/4 X 1/2		
PRESSURIZED FRESH WATER UNITS			ADDITIONAL ACCESSORIES AVAILABLE FROM RARITAN NOT INCLUDED	
60	221351	Solenoid Valve 12VDC	91	221147 1 1/2 inch Thru Wall Discharge Kit
60	221352	Solenoid Valve 24VDC	92	221148 1 inch Thru Wall Discharge Kit
61	221356	ME Nut 3/4 BSP		
62	221357	ME Hose Adapter, Straight		
67	221335	Hose 1/2"		
68	221340	Hose Clamps 1/2" (2)		
69	221300	Vacuum Breaker Assembly		
			1PCP32	C.P. Cleans Potties, 32 OZ
			1PCHGAL	Cleans Hoses, Tanks and MSD (gal)
			1PKO32	Kills Odors, 32oz
			KO2	Deodorant System (raw water models)
			SFH	Sanitation Hose 1 1/2" (sold by foot)
			SFH1	Sanitation Hose 1" (sold by foot)
			163000	Raw Water Strainer
			190601	Fresh Water Strainer
			RTME12D	Power Converter for 120/240 VAC
			STCTSA	Holding Tank Full Sensor (Stick on) For use with STC Flush Control.
			STCFL	Holding Tank Full Sensor (Float Switch) For use with STC Flush Control.

** Specify Voltage 12 or 24 VDC

EXPLODED PARTS



Optional Pressurized
Fresh Water Strainer
Part# 190601



Optional Raw
Water Strainer
Part# 163000